



SAFETY SERIES
www.americancanoe.org

FLOAT PLANS

1. THE 4 W'S OF YOUR PLAN

Follow these guidelines to create a proper float plan.



WHO:

Your name and everyone else who will be with you

WHERE:

Your planned put-in, take-out, and paddling route

WHEN:

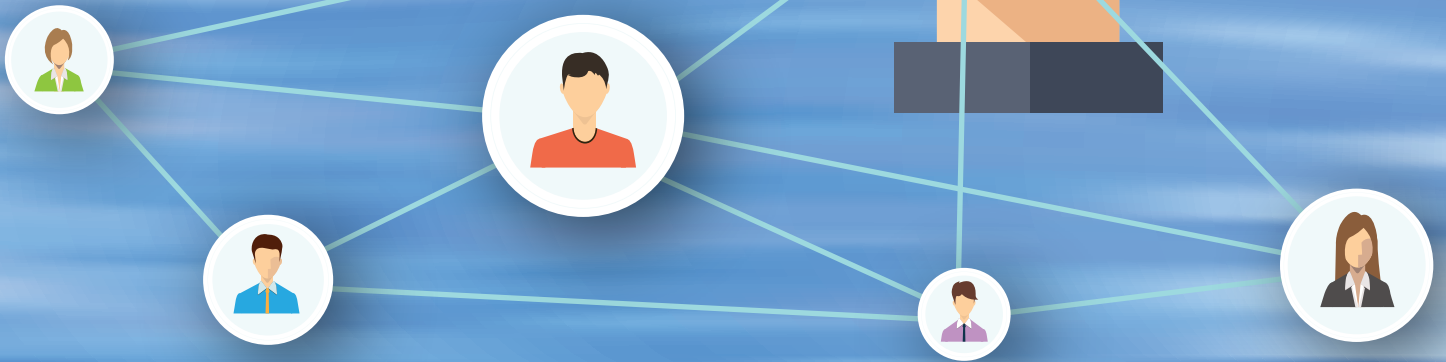
Your estimated launch and return time, and when to notify authorities if you don't check in

WHAT TO DO:

A plan for what to do if you don't return or check in as scheduled

2. MAKE IT A ROUTINE

Keep a basic float plan on your computer or phone and make a habit of filling it out and sending it to a reliable person every time you paddle.



3. SHARE YOUR PLAN

Tell a trusted friend or family member where and when you plan to paddle, so that someone dependable will send help if you get into trouble.



Produced under a grant from the Sport Fish Restoration and Boating Trust Fund, administered by the U.S. Coast Guard.